



# Sailing Notice of Race

23 July - 8 August 2021

© The Tokyo Organising Committee of the Olympic and Paralympic Games

Version: 4 March 2021

Change Log

Amendment 01: 16, Appendix 2, Appendix 4

Amendment 02: Appendix 1

The Organizing Authority is the Tokyo Organising Committee of the Olympic and Paralympic Games (Tokyo 2020) in conjunction with World Sailing.

## 1. RULES

- 1.1 [DP] Protocols relating to COVID-19 may be published at any time and will state if they have the status of a rule.
- 1.2 Additional Rules referenced in the Notice of Race (NoR) or Sailing Instructions may apply. These will be published on the World Sailing website [www.sailing.org/tokyo2020](http://www.sailing.org/tokyo2020)
- 1.3 The regatta will be governed by the rules as defined in The 2021-2024 Racing Rules of Sailing (RRS). Other documents under RRS Definition Rule (g) include:
  - 1.3.1 [DP] [SP] The Tokyo 2020 Equipment Regulations, 2021 version (ER).
  - 1.3.2 [DP] The Tokyo 2020 Support Team Regulations (including support boats), 2021 version (STR).
  - 1.3.3 [NP] [DP] [SP] The Tokyo 2020 Athlete Media Requirements, 2021 version (AMR).
  - 1.3.4 [DP] The Tokyo 2020 Competition Area Regulations, 2021 version (CAR).
  - 1.3.5 For Medal Races, World Sailing Addendum Q, Umpired Fleet Racing will apply and changes a number of racing rules. A link to the version that is current when the regatta begins will appear in the Sailing Instructions.
  - 1.3.6 The Olympic Charter and other governing documents issued by the International Olympic Committee (IOC).
- 1.4 RRS Appendix P, Special Procedures for Rule 42 will apply.
- 1.5 No National Authority prescriptions will apply.
- 1.6 A boat shall neither make nor receive radio, telephone or other electromagnetic transmissions or communications while racing, except in an emergency or when using equipment provided by the Race Committee or Organizing Authority (this restriction includes mobile telephones).
- 1.7 For the Men's Skiff, Women's Skiff and Mixed Multihull, RRS 44.1 and RRS P2.1 are changed so that the Two-Turns Penalty is replaced by a One-Turn Penalty.
- 1.8 In RRS 44.2 insert after the first sentence: "However, if Mark 1a is set, a boat may take a penalty for an incident in the zone around Mark 1 or on the leg between Mark 1 and Mark 1a, as soon as possible after leaving the zone around Mark 1a".
- 1.9 Information concerning Class Rule changes is contained in Appendix 4.
- 1.10 RRS 90.3(e) shall apply.
- 1.11 In all rules governing this regatta;
  - 1.11.1 Both 'athlete' and 'competitor' mean a person competing, or intending to compete, in the regatta.
  - 1.11.2 [SP] denotes a rule for which a standard penalty may be applied by the Race Committee or Technical Committee without a hearing (this changes RRS A5.1); and
  - 1.11.3 [NP] denotes a rule that shall not be grounds for protest by a boat and for which the International Jury may refuse to hold a hearing. This changes RRS 60.1(a) and 63.1.
- 1.12 If there is a conflict between languages the English text will take precedence.

## **2. IDENTIFICATION AND ADVERTISING**

- 2.1 Clothing and equipment worn or used by athletes and support personnel shall be in compliance with Rule 50 (and the By-laws to Rule 50) of the Olympic Charter while at the venue, including the Field of Play (FoP).
- 2.2 Except as permitted by NoR 3, a boat shall not display any form of publicity or propaganda, commercial or otherwise, including the display of a boat name, home port or club name.

## **3. [DP] ADVERTISING, BOW NUMBERS AND EQUIPMENT PROVIDED BY THE OA**

- 3.1 All boats shall arrive with mainsails carrying only their class insignia. The Organizing Authority will supply all required markings for sails, which shall be applied under its direction. No other sail numbers or letters may be displayed. This changes RRS G1.1. However, manufactures marks on sails that comply with the World Sailing Advertising Code are permitted.
- 3.2 When provided by the Organizing Authority, boats or competitors shall carry, display or wear the following as instructed:
  - 3.2.1 Bibs for all competitors;
  - 3.2.2 Coloured bibs for Event leaders (1<sup>st</sup>, 2<sup>nd</sup> and 3<sup>rd</sup>);
  - 3.2.3 Coloured dots on the mainsail for Event leaders (1<sup>st</sup>, 2<sup>nd</sup> and 3<sup>rd</sup>);
  - 3.2.4 National country codes and national flags;
  - 3.2.5 'Look of the Games' branding and athlete name panels;
  - 3.2.6 Cameras, camera dummies and sound equipment; and
  - 3.2.7 [SP] Tracking and timing system equipment.
- 3.3 470, 49er, 49erFX and Nacra 17 boats shall carry their national country flag on the spinnaker, as specified in the ER. These will not be provided by the Organizing Authority.

## **4. ELIGIBILITY QUALIFICATION AND ENTRY**

- 4.1 Entries will be offered to National Olympic Committees (NOCs) under the provisions of the Qualification System for the Tokyo 2020 Olympic Sailing Competition (as published on the World Sailing website from time to time).
- 4.2 Athletes and support persons shall comply with the Olympic Charter, as well as with World Sailing rules and regulations, in order to be eligible for participation in the Tokyo 2020 Olympic Sailing Competition and shall be entered by an NOC.
- 4.3 Each athlete shall be a national of the country of the NOC that is entering him or her. An athlete's nationality shall be determined according to the Olympic Charter Rule 41 and the By-law to Rule 41.
- 4.4 World Sailing Eligibility under World Sailing Regulation 19 is required.
- 4.5 Each athlete shall be registered as a World Sailing Sailor on the World Sailing website.
- 4.6 The maximum number of entries ('Olympic quota') for each of the 10 Olympic Events is set out in the following table, based on a total of 350 athletes:

#### 4.7

Event	Class	Tokyo 2020 Quota (Boats)
Men's Windsurfer	RS: X	25
Women's Windsurfer	RS: X	27
Men's One Person Dinghy	Laser	35
Women's One Person Dinghy	Laser Radial	44
Men's One Person Dinghy Heavyweight	Finn	19
Men's Two Person Dinghy	470	19
Women's Two Person Dinghy	470	21
Men's Skiff	49er	19
Women's Skiff	49er FX	21
Mixed Multihull	Nacra 17 (Foiling)	20

4.8 World Sailing may modify the quota for an individual Event, in consultation with Tokyo 2020 and the IOC, provided that the total number of 350 athletes is not exceeded.

4.9 An entry is not complete until the boat has completed registration at the venue. Registration will include equipment and entry requirement checks.

## 5. ACCREDITATION, TEAM CONFIRMATION AND REGISTRATION

- 5.1 Only accredited athletes and support persons shall have access to the venue. Accreditation will be managed through NOCs. For the purposes of the RRS Definition Support Person, any person holding accreditation through an NOC is a support person under the RRS.
- 5.2 Team leaders shall complete the Entry Data Checklist provided at the Technical Meeting for team leaders on 20 July in order to confirm their athlete information. This form must be completed and returned to Sport Information by 10:00 on 22 July. No substitution of athletes shall be allowed after this date except as permitted by the IOC Late Athlete Replacement Policy.

## 6. FORMAT

6.1 For each Event the regatta will consist of an Opening Series and a Medal Race (if scheduled).

### 6.2 Opening Series

For the opening series of each Event the number of races scheduled is as follows:

Event	Number of Races	Maximum Races per Day
Men's Windsurfer	12	3
Women's Windsurfer	12	3
Men's One Person Dinghy	10	3
Women's One Person Dinghy	10	3
Men's One Person Dinghy Heavyweight	10	3
Men's Two Person Dinghy	10	3
Women's Two Person Dinghy	10	3
Men's Skiff	12	4
Women's Skiff	12	4
Mixed Multihull	12	4

### 6.3 Medal Race

6.3.1 A Medal Race will be scheduled for each Event if six or more opening series races are completed.

6.3.2 The ten highest ranked boats at the conclusion of the opening series of each Event will advance to the Medal Race.

## 7. SCHEDULE

7.1 The schedule, including equipment inspection and racing, is as follows:

Date	Time	Activity
17 May	09:00	Soft opening of the venue, subject to the current COVID-19 situation in Kanagawa Prefecture and COVID-19 countermeasures
From 17 May – 12 July	09:00 – 18:00	Unofficial training, subject to the current COVID-19 situation in Kanagawa Prefecture and COVID-19 countermeasures
13 July	All day	Venue closed for security sweep
14 July	08:00	Venue opens. Support Team Registration opens. Field of Play (FoP) Closed
14 July	08:30	Draw of Supplied Equipment
14 July	From 09:00	Distribution of Supplied Equipment
15 July	11:00	FoP opens
20 July	09:00	Technical Meeting for team leaders
22 July	15:00	Venue Medical Meeting
23 July	All day	Venue and FoP closed
23 July	20:00 – 23:00	Tokyo 2020 Opening Ceremony
From 21-27 July	09:00 – 18:00	Equipment Inspection
From 25 July – 5 August	All day	Competition days (see NoR 7.4) with 5 August reserve day
8 August	20:00 – 23:00	Tokyo 2020 Closing Ceremony

7.2 The competition and equipment inspection schedule is shown in Appendix 1.

7.3 The Sailing Instructions will define the process for the publication of the daily race schedule, including the allocation of Events to course areas.

7.4 On 25 July the first warning signal will be 12:00, on subsequent days the warning signal may be earlier.

7.5 No warning signal will be made after 17:00 each day for an opening series race. No warning signal will be made after 16:30 each day for a Medal Race.

7.6 From 21 July to 5 August, there will be a daily team leaders' meeting at 09:00, except on 23 July.

## 8. VENUE

8.1 The Sailing competition will take place at the Enoshima Yacht Harbour, Japan. The venue is shown in Appendix 2

8.2 Sport Information will be available when the venue is open, in accordance with NoR 7.1.

8.3 The FoP will be in Sagami Bay as shown in Appendix 3. Racing may be moved to other locations within the FoP at the discretion of the Race Committee.

## 9. COURSES

9.1 The courses will be Trapezoid or Windward/Leeward with optional finishing legs.

9.2 The target times in minutes for the Opening Series and Medal Races are:

Event	Opening Series	Medal Race
Men's Windsurfer	20-25	20
Women's Windsurfer	20-25	20
Men's One Person Dinghy	50	25
Women's One Person Dinghy	50	25
Men's One Person Dinghy Heavyweight	50	25
Men's Two Person Dinghy	50	25
Women's Two Person Dinghy	50	25
Men's Skiff	30	20
Women's Skiff	30	20
Mixed Multihull	30	20

## 10. SAILING INSTRUCTIONS

Sailing Instructions and all other documents governing the event, including those listed in NoR 1.3 will be first published by 1 May 2021 on the World Sailing website.

## 11. INTERNATIONAL JURY

An International Jury has been appointed in accordance with RRS 91(b). Its decisions will be final as provided in RRS 70.5.

## 12. SCORING

12.1 RRS Appendix A will apply. RRS B8 is deleted.

12.2 One race is required to be completed to constitute a regatta.

12.3 When fewer than three races in the opening series have been completed, no score shall be excluded.

12.4 For the Medal Race RRS A4 is changed so that the points are doubled. RRS A5.2 is changed so that the scores are based on the number of boats assigned to the Medal Race and then doubled. Discretionary and standard penalties will not be doubled. The score for the Medal Race shall not be excluded from the series score.

12.5 Ties in the series score between boats with different Medal Race point scores shall be broken in favour of the boat that scored better in the Medal Race. This changes RRS A8.

12.6 The boats assigned to compete in the Medal Race will be ranked highest in the regatta except for a boat penalised in the Medal Race under RRS 6 or 69 or under the Olympic Charter.

## 13. PRIZES

- 13.1 The medals and diplomas for each Event in the Tokyo 2020 Olympic Sailing Competition will be awarded in accordance with the Olympic Charter:
  - 13.1.1 First prize will be a gold medal and diploma;
  - 13.1.2 Second prize will be a silver medal and diploma;
  - 13.1.3 Third prize will be a bronze medal and diploma; and
  - 13.1.4 Prizes for 4th to 8th places will be diplomas.

## 14. SUPPLIED EQUIPMENT

- 14.1 For the Men's and Women's One Person Dinghy Events:
  - 14.1.1 Boats, including sails will be supplied by the Organizing Authority.
  - 14.1.2 The list of equipment to be supplied will be stated in the ER.

## 15. EQUIPMENT AND EQUIPMENT INSPECTION

- 15.1 A Technical Committee has been appointed in accordance with RRS 92.
- 15.2 This event is an international event for the purpose of RRS G1.1(b).
- 15.3 Boats shall be available for inspection in accordance with NoR 7.1 and the Equipment Inspection Schedule.
- 15.4 470 and Finn boats shall produce a valid measurement certificate, which for the 470 Events includes the completed measurement form. RRS 78.2 is deleted and replaced by: "When a rule requires a valid certificate to be produced or its existence verified the certificate shall be produced before the boat races. If the certificate is not produced or verified before the boat races the entry of the boat shall be rejected unless the International Jury is satisfied there are exceptional circumstances."
- 15.5 The procedures for inspection, limitations on equipment permitted in the venue, and other equipment related matters will be specified in the ER.
- 15.6 The fact that race officials may conduct inspections of a boat does not reduce the responsibilities of each competitor set out in this NoR, the RRS and the rules listed in NoR 1.3.

## 16. SUPPORT TEAMS (INCLUDING SUPPORT VESSELS)

- 16.1 A support vessel includes any vessel that is under the control or direction of a support person (as defined in the RRS), including any person gathering data that may be used at a later time.
- 16.2 No more than one support vessel per National Authority per Event entered may be registered.
- 16.3 Support vessels shall be registered at Sport Information either before leaving the marina for the first time or by 18:00 on the day before the first race of the Event that it is supporting, whichever is earlier.
- 16.4 Support vessels shall display the 3 letter code of their NOC at all times while afloat clearly visible from both sides of the vessel. The minimum height for the letters shall be 200 mm.
- 16.5 Support vessels shall clearly display on both sides of the vessel (tubes, hull or console) a unique sticker. The stickers will be supplied by the Organizing Authority.



- 16.6 The Organizing Authority may, at its discretion, refuse a support vessel's entry to the venue if it is deemed unsuitable. Generally, open vessels less than 7.5 metres in length, having minimum or no superstructure (cabin, coach house, bridge etc.), will be considered suitable.
- 16.7 When not in use, support vessels shall be appropriately berthed at the sailing venue in the allocated areas for support vessels. Limitations of access to the Venue and the FoP will be defined in the CAR and STR.
- 16.8 Limitations of equipment that may be carried and mandatory equipment that shall be carried on support vessels will be confirmed in the STR. However, teams must note:
- 16.8.1 Electronics, as defined by the STR, will not be permitted to be carried on support vessels.
- 16.8.2 The Race Committee may establish support vessel zones, which will be defined in the STR.
- 16.9 An NOC, competitor, or support person shall not leave any device, piece of equipment, buoy, marker or similar item permanently in or around the water without the prior written permission of the Technical Delegates (except for support vessels moored overnight). The Organizing Authority may reject or cancel entries under RRS 76.1 where the relevant NOC (including its support team and competitors) is found by the International Jury to have breached this provision in the period commencing from 1 January 2021. This is irrespective of whether an entry has been accepted at the time of the breach.
- 16.10 A Japanese boat license is required to drive a vessel in Japan. An operator card issued by the Japanese Government available through the Japanese Sailing Federation is sufficient for non-Japanese drivers.

## 17. [DP] BERTHING

Athlete boats ashore shall be kept in their assigned places in the boat park.

## 18. [DP] MEDIA RIGHTS

- 18.1 Competitors shall comply with the AMR. The AMR will include further information on television production, tracking, press conferences, interviews, sail past routes and promotion of the regatta.
- 18.2 By participating in the event competitors automatically grant to the Organizing Authority, their sponsors and World Sailing the right in perpetuity to make, use and show, from time to time at their discretion, any motion pictures and live, or recorded television and other reproductions of the athlete during the period of the competition without compensation.
- 18.3 Boats and athletes may be required to carry cameras, sound equipment or positioning equipment as specified by the Organizing Authority.
- 18.4 The top three competitors as well as the individual race winners may be required to attend a media press conference each day.
- 18.5 Competitors may be required for interviews at the regatta.

## 19. DOPING CONTROL

IOC Anti-Doping Rules applicable to the Games of the XXXII Olympiad (Tokyo 2020) will apply.

## 20. [NP] INSURANCE

- 20.1 Each 'person in charge' (as defined in RRS 46) shall hold a valid insurance certificate showing proof of third-party liability coverage of at least JPY200,000,000 (or equivalent) per incident.
- 20.2 Each support boat shall have valid insurance including third party liability coverage of at least JPY200,000,000 (or equivalent) per incident.
- 20.3 The Organizing Authority is not responsible for verifying the status or validity of certificates. The Organizing Authority will not arrange insurance for NOCs who fail to arrange their own insurance.

## 21. RISK STATEMENT

- 21.1 Sailing is by its nature an unpredictable sport and therefore inherently involves an element of risk. Competitors and support persons participate in the event entirely at their own risk. RRS 3 states: "The responsibility for a boat's decision to participate in a race or to continue racing is hers alone." By taking part in the event, each competitor agrees and acknowledges that:
  - 21.1.1 They are aware of the inherent element of risk involved in the sport and accept responsibility for the exposure of themselves, their crew and their boat to such inherent risk whilst taking part in the event;
  - 21.1.2 They are responsible for the safety of themselves, their crew, their boat and their other property whether afloat or ashore;
  - 21.1.3 They accept responsibility for any injury, damage or loss to the extent caused by their own actions or omissions;
  - 21.1.4 By participating in any race, they are satisfied that their boat is in good order, complies with the class rules, is equipped to sail in the event and they are fit to participate;
  - 21.1.5 The provision of a race management team, patrol boats, umpires and other officials and volunteers by the organizer does not relieve them of their own responsibilities;
  - 21.1.6 The provision of patrol boat cover is limited to such assistance, particularly in extreme weather conditions, as can be practically provided in the circumstances.
  - 21.1.7 It is their responsibility to familiarize themselves with any risks specific to this venue or this event drawn to their attention in any rules and information produced for the venue or event and to attend any safety briefing held for the event.

## 22. AMENDMENTS TO THE NOTICE OF RACE

This NoR may be changed. Changes will be posted on the World Sailing website.

### Contact Details

E-mail (logistics): [sailing\\_log@tokyo2020.jp](mailto:sailing_log@tokyo2020.jp)

E-mail (other issues): [sailing\\_info@tokyo2020.jp](mailto:sailing_info@tokyo2020.jp)

\*Regarding non-sports inquiries, NOCs may contact Tokyo 2020 NOC relations representative and copy it to [sailing\\_info@tokyo2020.jp](mailto:sailing_info@tokyo2020.jp)

Event Website: [www.sailing.org/tokyo2020](http://www.sailing.org/tokyo2020)

# Appendix 1

## Competition and Equipment Inspection Schedule

Event	Equipment Inspection	Equipment Inspection Contingency Days	Races (including reserve days)	Number of Races
Men's Windsurfer	21-22 July	23-24 July	25 July – 1 August	12 + Medal Race
Women's Windsurfer	21-22 July	23-24 July	25 July – 1 August	12 + Medal Race
Men's One Person Dinghy	21-22 July	23-24 July	25 July – 2 August	10 + Medal Race
Women's One Person Dinghy	21-22 July	23-24 July	25 July – 2 August	10 + Medal Race
Men's One Person Dinghy Heavyweight	24-26 July	22-23 July	27 July – 4 August	10 + Medal Race
Men's Two Person Dinghy	24-26 July	23, 27 July	28 July – 5 August	10 + Medal Race
Women's Two Person Dinghy	24-26 July	23, 27 July	28 July – 5 August	10 + Medal Race
Men's Skiff	22, 24, 25 July	23, 26 July	27 July – 3 August	12 + Medal Race
Women's Skiff	22, 24, 25 July	23, 26 July	27 July – 3 August	12 + Medal Race
Mixed Multihull	24-26 July	23, 27 July	28 July – 4 August	12 + Medal Race

Event	20-Jul	21-Jul	22-Jul	23-Jul	24-Jul	25-Jul	26-Jul	27-Jul	28-Jul	29-Jul	30-Jul	31-Jul	1-Aug	2-Aug	3-Aug	4-Aug	5-Aug		
Men's Windsurfer	TECHNICAL MEETING	EI	EI	OPENING CEREMONY		1,2,3	4,5,6	R	7,8,9	10,11,12	R	MR	RMR						
Women's Windsurfer		EI	EI			1,2,3	4,5,6	R	7,8,9	10,11,12	R	MR	RMR						
Men's One Person Dinghy		EI	EI				1,2	3,4	5,6	R	7,8	9,10	R	MR	RMR				
Women's One Person Dinghy		EI	EI				1,2	3,4	5,6	R	7,8	9,10	R	MR	RMR				
Men's One Person Dinghy (Heavyweight)							EI	EI	EI	1,2	3,4	5,6	R	7,8	9,10	R	MR	RMR	
Men's Two Person Dinghy							EI	EI	EI		1,2	3,4	5,6	R	7,8	9,10	R	MR	RMR
Women's Two Person Dinghy							EI	EI	EI		1,2	3,4	5,6	R	7,8	9,10	R	MR	RMR
Men's Skiff					EI		EI	EI		1,2,3	4,5,6	R	7,8,9	10,11,12	R	MR	RMR		
Women's Skiff					EI		EI	EI		1,2,3	4,5,6	R	7,8,9	10,11,12	R	MR	RMR		
Mixed Two Person Multihull							EI	EI	EI		1,2,3	4,5,6	R	7,8,9	10,11,12	R	MR	RMR	

EI: Equipment Inspection Day

1, 2, 3: Racing Day

R: Reserve Racing Day

MR: Medal Race Day

RMR: Reserve Medal Race Day

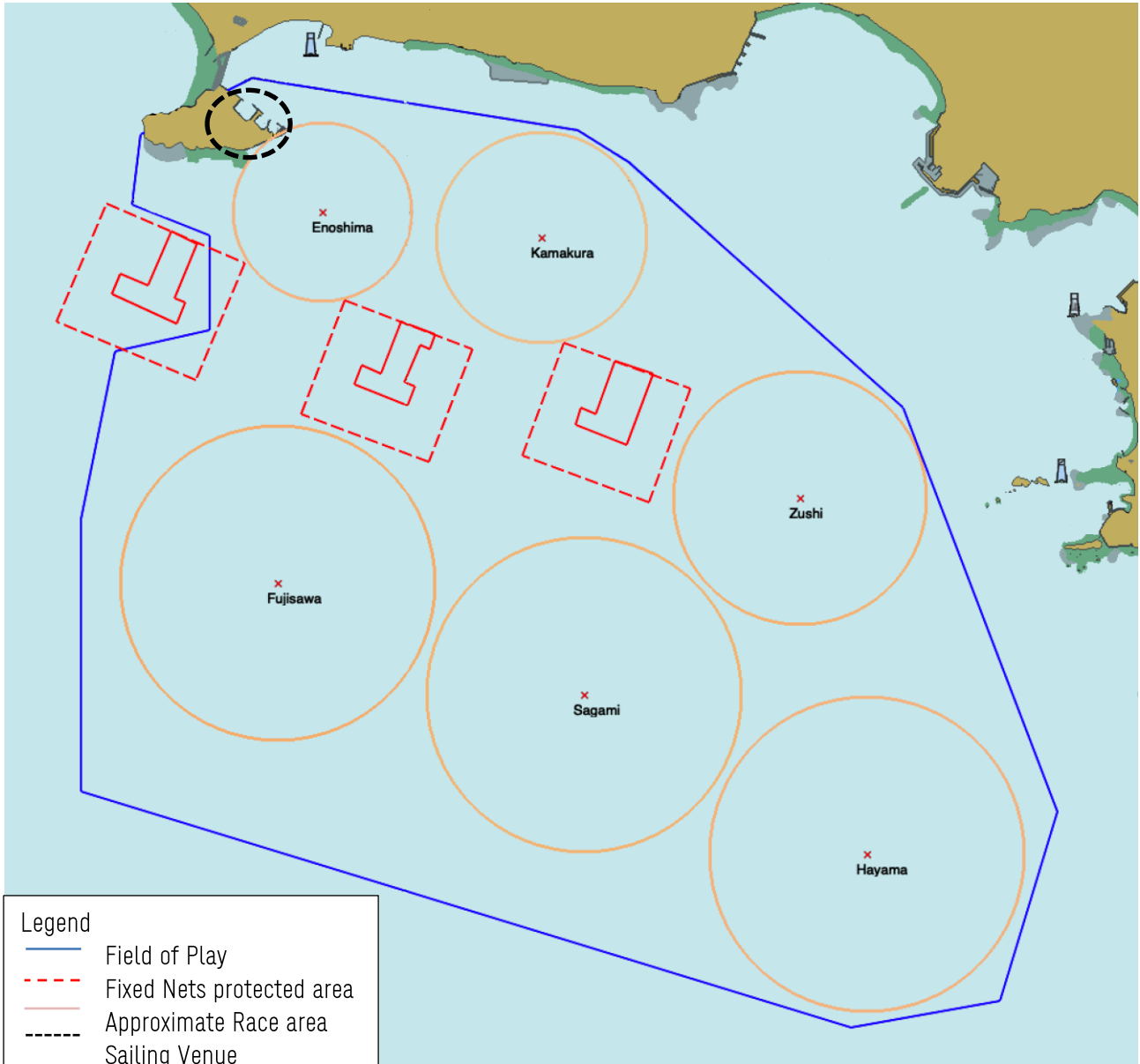
# Appendix 2

## Venue



# Appendix 3

## Field of Play



Legend

- Field of Play
- - - Fixed Nets protected area
- - - Approximate Race area
- - - Sailing Venue

\*Not for navigational purposes.

# Appendix 4

## Class Rule Information

- 1 Finn Class Rule C.6.2 applies.
- 2 The following class rules are changed for this event only (the relevant class associations have approved these changes under RRS 87):

Class	Class Rule	Change
RS:X	A.6.1	Does not apply
RS:X	C.9.2	Does not apply
RS:X	C.6.1c)	Amend to read: c) Only hulls with the serial number of NP16RSXACI16060001 or higher shall be used.
RS:X	C.7.1a)	Amend to read: a) The Men's Windsurfer event shall only use the 660mm Fin with serial number 1266 or higher. The Women's Windsurfer event shall only use the 600mm Fin with serial number 212 or higher.
RS:X	C.8.1b)	Does not apply
RS:X	C.8.1d)	Amend to read: d) Only the RS:X EVO <b>mast</b> shall be used.
Laser/Radial	Part 2, Rules 2 & 4	Do not apply
Finn	A.7.2	Does not apply
Finn	C.10.3(a) & (c)	Do not apply
470	A.8.1	Does not apply
470	C.10.3	Does not apply
470	C.10.4(a)1, 2 & 4	Do not apply
470	C.10.6	Does not apply
470	C.7	Amend to add: C.7.3 LIMITATIONS (a) Only hulls first certified after 1 January 2013 shall be used.
49er/FX	A.8.2	Does not apply
49er/FX	C.10.3(a)(i), (ii) & (iv)	Do not apply
49er/FX	C.10.3(b)(ii)	Does not apply
49er/FX	C.7.4	Amend to add: (c) Only hulls with original World Sailing Plaque number 1465 or greater shall be used.
49er/FX	C.8.2	Amend to add: (c) Only <b>daggerboards</b> and <b>rudders</b> with 9er certified equipment label number 30000 or greater shall be used. Those with number 30000 or greater built before 1 October 2015 shall be accompanied by manufacturer's declaration of compliance.

# Appendix 4

Class	Class Rule	Change
49er/FX	C.10.4 (b)	Amend to read: For the 49er, only gennakers with serial number 492630 or higher shall be used. For the FX, only gennakers with serial number 6614 or higher shall be used.
Nacra 17	A.7.2	Does not apply
Nacra 17	C.8.4	(d) Only <b>daggerboards</b> with licensed manufacturer's serial number ZP/ZS 00789 or lower, and <b>rudders</b> with licensed manufacturer's serial number T00639 or lower, shall be used.
Nacra 17	C.11.3(b)	Does not apply